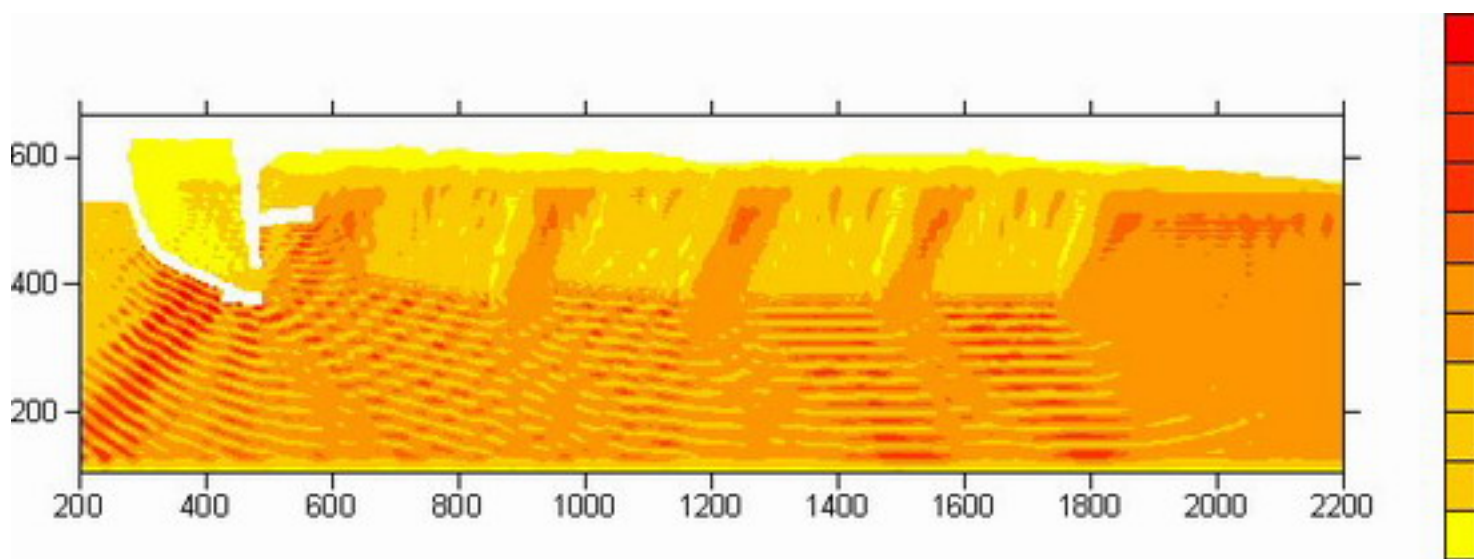
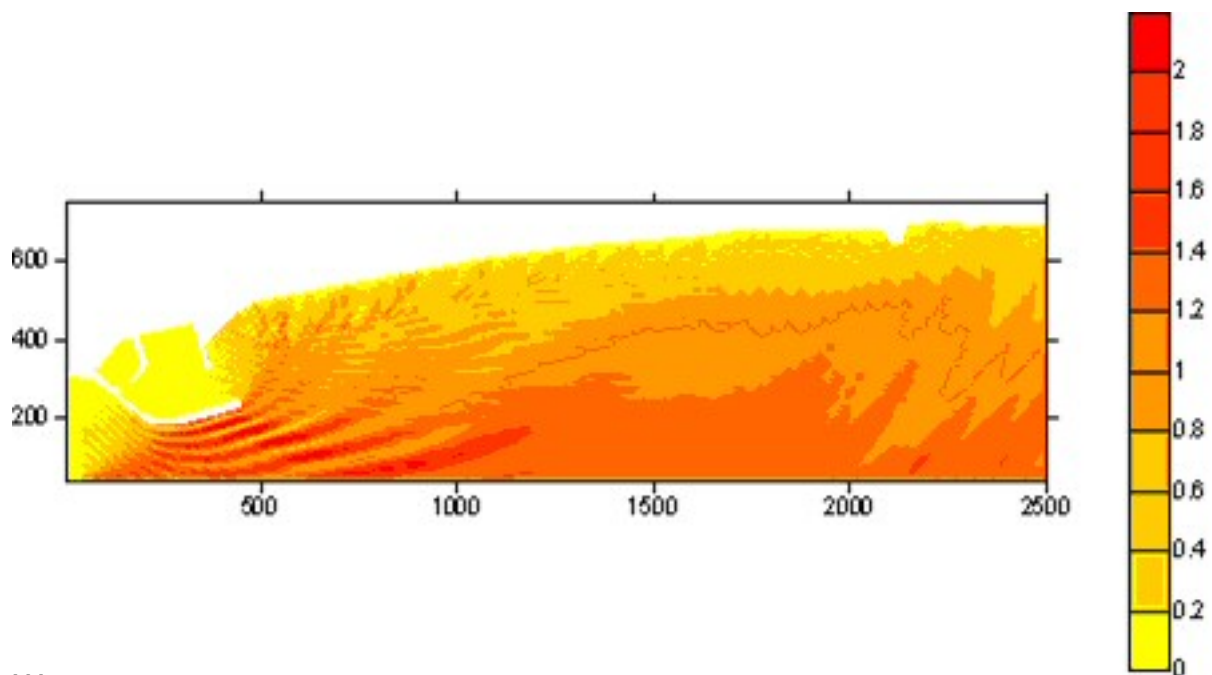


- An Operational wave model for the Mediterranean Sea-MAST I
- Hydrodynamic processes in the regions of freshwater influence -MAST II
- Atlas of wave energy resource in Europe - JOULE II
- Research of sewage disposal in Chersonisos area of Mallia Bay in Crete.
- A European Coupled Atmosphere Wave Ocean Model - MAST II
- Submarine telecommunications link Lagonissi - Chania with a branch at Milos. Short-term change of coast depth from the cross-shore wave action
- Performance of soft beach systems -MAST III
- Disposal of dredged materials of Alexandroupolis Port
- Statistical methodology for the coastal and open sea wave climate estimation - MAST III
- Wave forecasting and pollutants transport models in open sea - POSEIDON
- Oceanographic measurements study in 'Study of Extension to the sea of runway 10-28 in Macedonia Airport '
- Coastal engineering study and preliminary planning of harbour installations of Ouranoupolis port
- Environmental management of coasts with the use of floating breakwaters (PENED 2001)
- Final solution of erosion problem of Paralias Municipality coast



Wave contours  $H_s$  (m) for SE-S winds at the Paralias Municipality coastal zone

- Protection study of Ierapetra Port. Oceanographic and coastal engineering study
- Final solution of erosion problem of Platamonas coast



Wave contours  $H_m$  (m) for Enjil in the Blatano region  
2009 Coastal engineering study for the Enjil region of the fishing port (PENED)